



Endeavour® 5 AIS Module

Product Overview

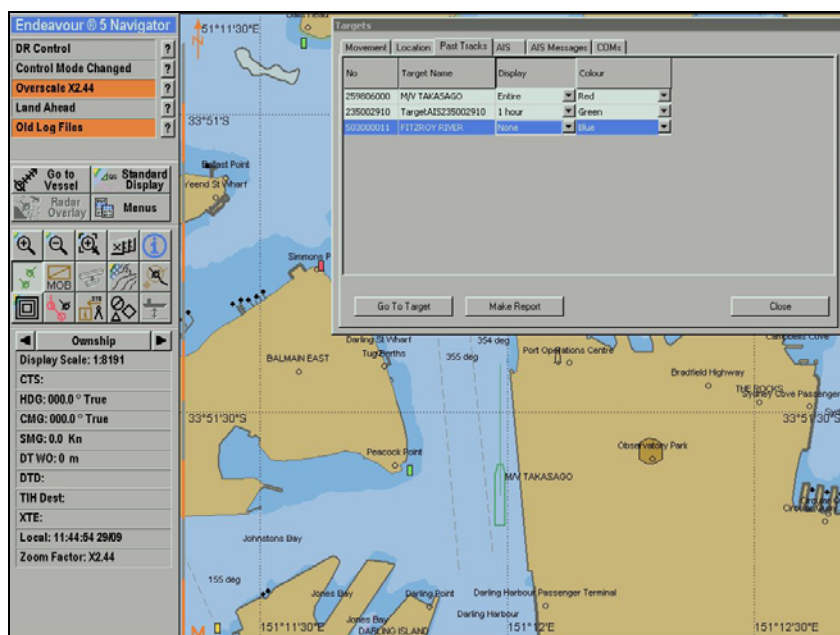
The Endeavour® 5 Navigator AIS Module provides the ability to receive, display and manage target information using Endeavour® 5 Navigator when connected to an AIS transponder.

AIS transponders are now mandatory on SOLAS class vessels as mandated by the IMO. They are also becoming more common on many other types of vessels as mariners become aware of the benefits to safe navigation that AIS can provide.

The installation of a Class A AIS transponder includes a Minimum Keyboard Display that provides the user with access to the target information that is being received as well as the ability to configure own ship system.

While having access to AIS information improves the mariner's awareness of other vessels within their vicinity, being able to display and manage AIS target information within an Electronic Chart System (ECS) such as Endeavour® 5 Navigator, offers many additional benefits by improving the mariner's broader situation awareness.

Along with all other vessels fitted with active AIS, the own ship's AIS can also be made available and plotted on the ECS. This negates the need to have a GPS and other sensors connected directly or it can be coupled with GPS to act as a secondary positioning device if required. Certain mandated AIS transponders such as on SOLAS class vessels can provide heading information that again can be used either as a primary or secondary sensor input.



Target Display

Endeavour®5 Navigator displays any number of AIS targets overlaying either raster or vector chart information. These target icons display target ID and when available vessel name and the vessel's scaled outline.

Target position and heading is updated as frequently as the information is received by the AIS Transponder. Between position reports the target's position may be dead reckoned based on current course and speed.

Target tracks are recorded and displayed as a breadcrumb past track as the target progresses on its course. Each target past track can be configured by the user to control:

- Length of past track displayed behind the target
- Colour of past track
- Display of past track (on/off)

Target Information

AIS can provide a broad range of information about a vessel from which the AIS information is being received. This information includes:

Static information: <ul style="list-style-type: none">• MMSI• IMO number• Call sign & name• Length and beam• Type of ship• Location of the position-fixing antenna on the ship	Dynamic information: <ul style="list-style-type: none">• Ship's position with accuracy indication and integrity status• Position time stamp (in UTC)• Course over ground (COG)• Speed over ground (SOG)• Heading• Navigational status• Rate of turn (where available)
Voyage related information: <ul style="list-style-type: none">• Ship's draught• Hazardous cargo (type)• Destination and ETA (at masters discretion)• Route plan (waypoints)	Short safety-related messages: <ul style="list-style-type: none">• Free format text message - sent as required. Target information can be accessed

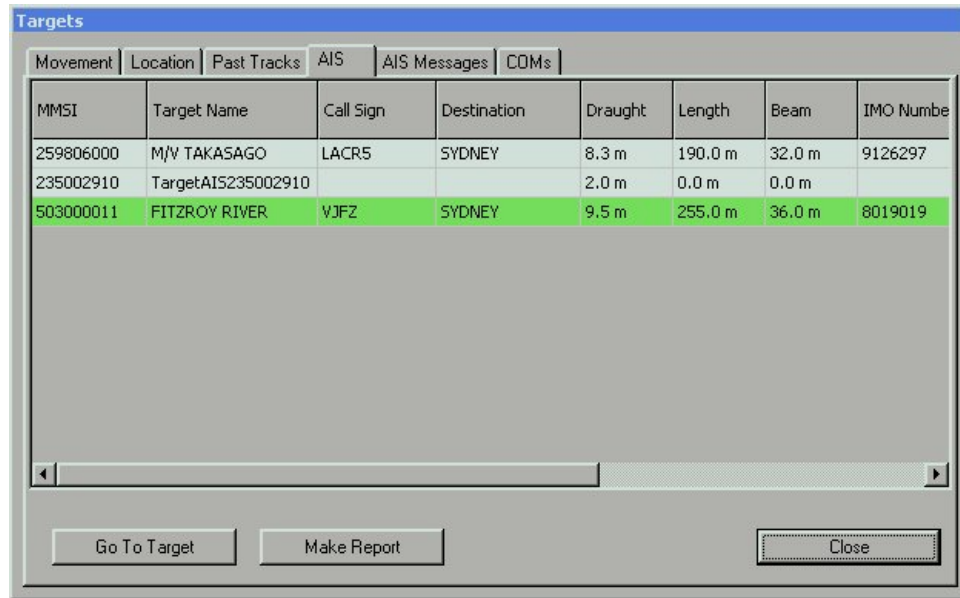
All target information received is logged by Endeavour®5 Navigator for review if required.

Target information within Endeavour®5 Navigator can be accessed through the **Targets** or **Information Display** dialogs.

Targets Dialog

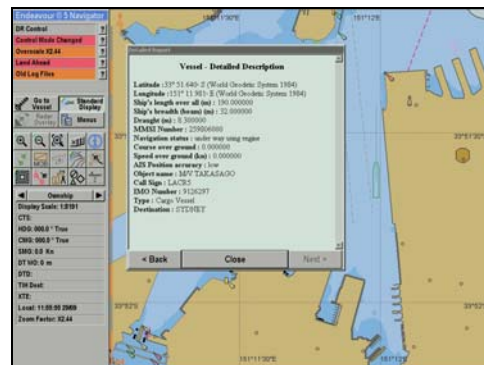
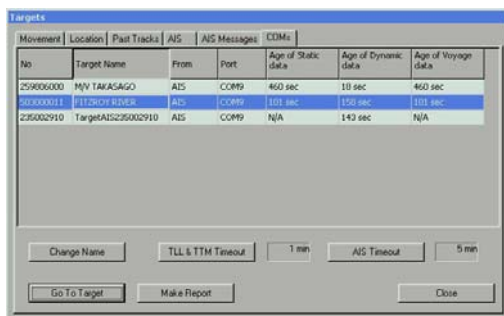
The **Targets** dialog provides access to all received AIS information as well as derived information such as the Range and Bearing to Target from own ship and the age of the transmitted information.

Target information displayed in the **Targets** dialog is updated as new information is received by the transponder, always providing the user with the most current information available.



Functions accessible via the **Targets** dialog include:

- Go to Vessel, which will centre the chart display on a selected target.
- View Information, which activates the Information Display, displaying all the information available for a selected target in a single screen.
- Target and Sensor Configuration capabilities such as defining settings for the past track of a target and naming the target as well as defining timeout parameters and activating the dead reckoning of a target.
- AIS messages that are received are listed and messages can also be sent to individual targets or broadcast to all targets within range.



Information Display

All the available information for a single target can be displayed in a single Information Display window. The information displayed is current at the time the Information Display is activated.

The Information Display for a target can be activated from the **Targets** dialog **Make Report** button or by selecting a target on the Chart Display and using the right hand mouse button to access the Target Information option).

