

Endeavour[®] 5 Navigator

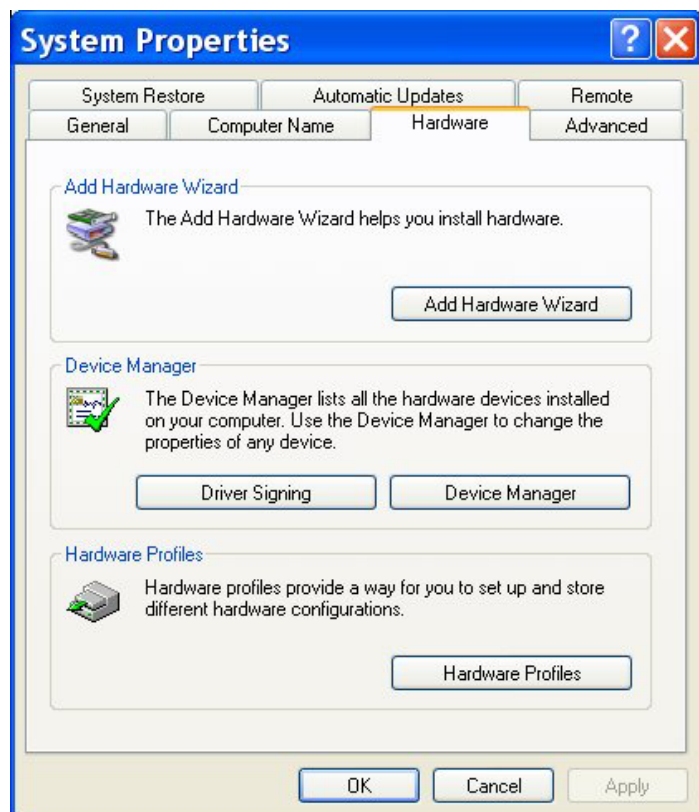
FAQ

Setting Up Endeavour on Windows XP with multiple serial (com) ports

When there are multiple serial (COM) ports being fed NMEA sentences on start up, the XP operating system thinks that new hardware has been added and assigns a serial mouse driver to these ports.

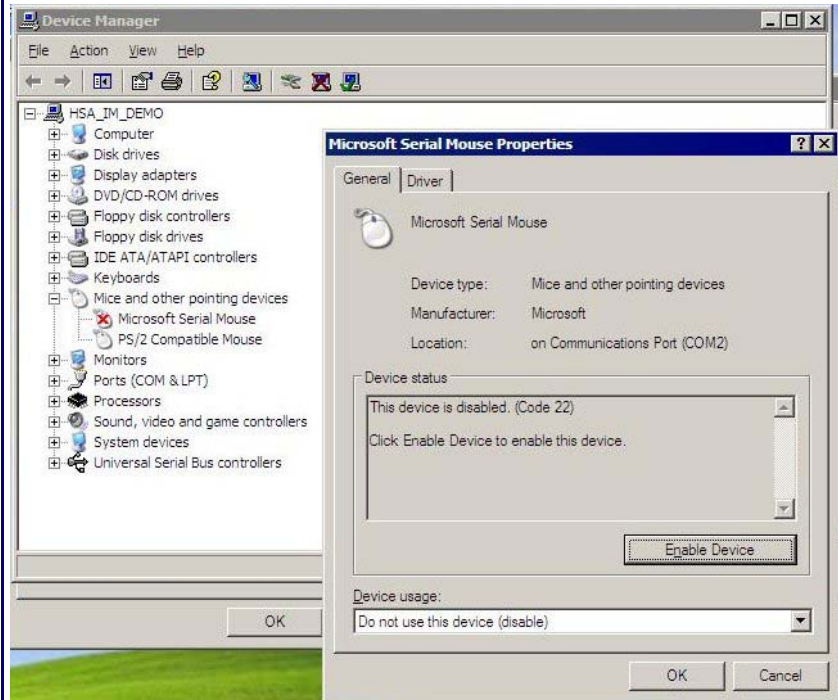
The problem shows up when the machine is shutdown and restarted, the mouse arrow moves around the screen by itself. To correct this problem the serial mouse driver needs to be disabled.

1. With the machine turned off, plug in one of the NMEA devices and have it feeding information to the COM port and start the machine. During this phase the mouse may be moving at random around the screen. Disconnect the NMEA device to stop the mouse pointer from moving.
2. Go to the **Start / Setting / Control Panel / "System Properties"** dialog and select the **Hardware** tab and then click the **Device Manager** button.



3. Once the "Device Manager" dialog is displayed open the **Mice and other pointing devices** directory and select **Microsoft Serial Mouse** and right click to open its **Properties** setting. Once the **Properties** setting is displayed select the **Device usage** pull down button and activate the **Do not use the device (disable)** option. The **Microsoft Serial Mouse** icon will now display a red cross indicating that this device has been disabled.

4.



5. Repeat steps 1 and 2 for as many serial NMEA devices as are to be attached to the system, leaving already configured devices in place while additional ones are added.

To test that your changes have worked, Start Endeavour and assign the COM ports to the desired sensors. Log out of Endeavour and restart the computer. Run Endeavour and check that the assigned COM ports have not changed from their previous settings.

For more information
contact:



www.hsa.com.au



+61-2-9957 3549