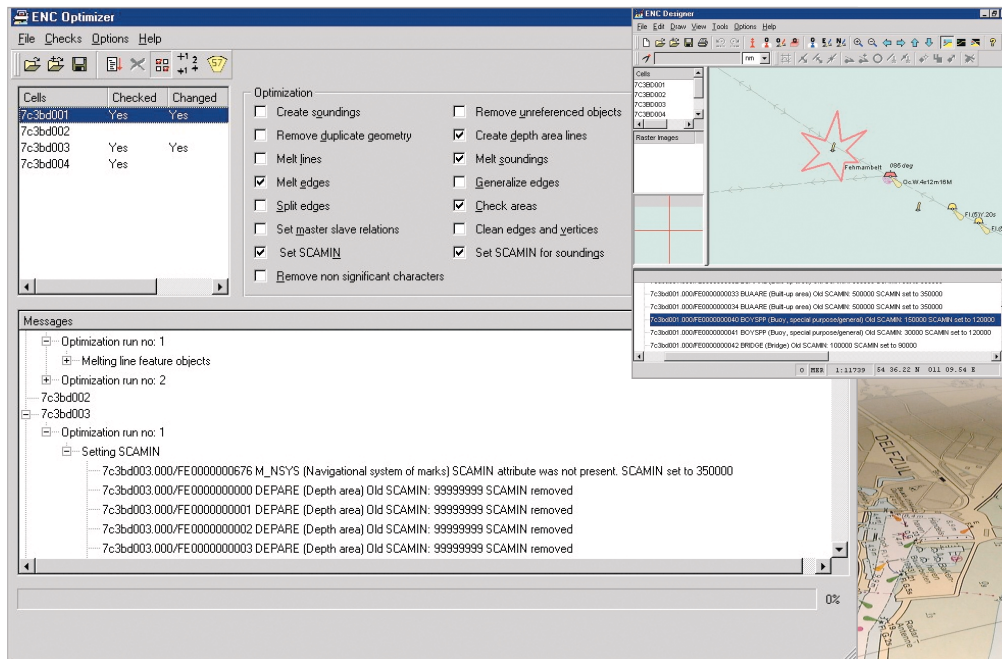


# ENC Optimizer

The software tool that makes the most of your Electronic Navigational Charts (ENC)



User Interface  
and Viewer  
Logfiles of ENC  
Optimizer.

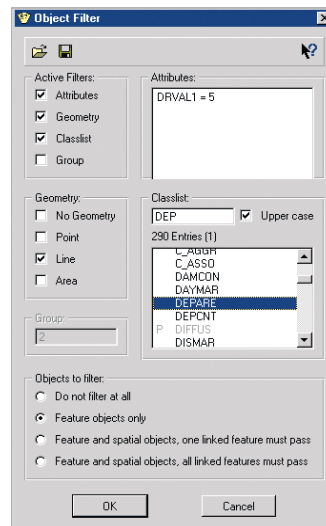
Once you have produced your Electronic Navigational Chart (ENC) you want to ensure it is as efficient as possible for use in ECDIS systems. Utilizing ENC Optimizer during data production will minimize memory requirements and maximize display performance.

ENC Optimizer provides a set of automatic functions to directly access feature data as well as spatial data. A number of these functions can be customized by means of user-defined settings. This allows to easily adjust the optimization functions to the varying qualities of produced ENCs.

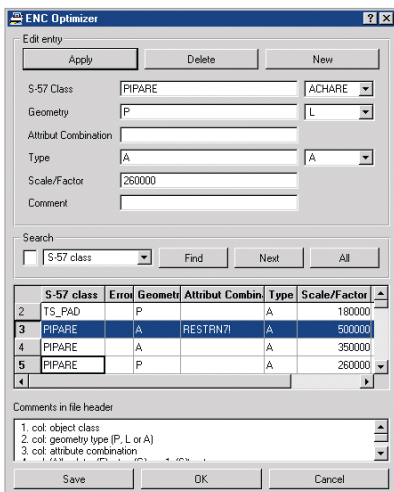
- Contains object class filter
- Integrates with ENC Designer
- Available on Windows NT/2000/XP, LINUX, and other UNIX platforms

# Apply ENC Optimizer during data production to minimize memory requirements and maximize display performance of the generated ENC.

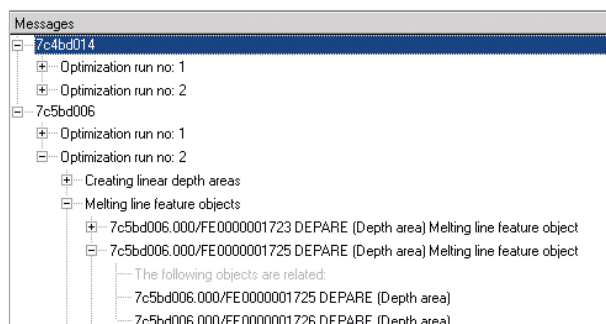
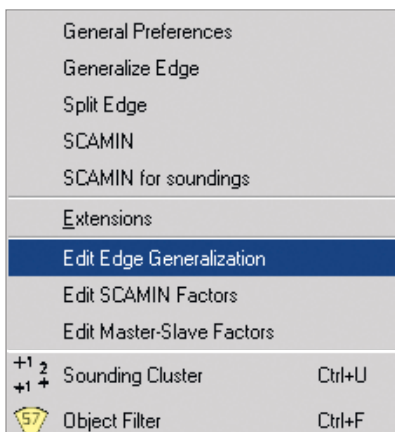
Multiple options for filtering objects.



Assigning user-defined SCAMIN attributes.



The options in ENC Optimizer.



Displaying messages in ENC Optimizer.

- Removes unnecessary vertices from edges
- Joins adjacent edges, and splits them into portions for optimum performance
- Removes duplicate and partially redundant edges
- Removes nonsignificant characters from attribute fields
- Generates sounding clusters
- Checks and repairs polygon topology
- Automatically assigns SCAMIN values to S-57 feature objects according to user-defined values
- Sets S-57 Master-Slave Relationships
- Automatically assigns SCAMIN values to sounding objects according to their depth values

When used in conjunction with ENC Designer ENC Optimizer uses the display facilities of ENC Designer to go through and view the data that have been produced. Thus you can easily check the results of the data optimization process.

For further information please contact [sales@sevens.com](mailto:sales@sevens.com)