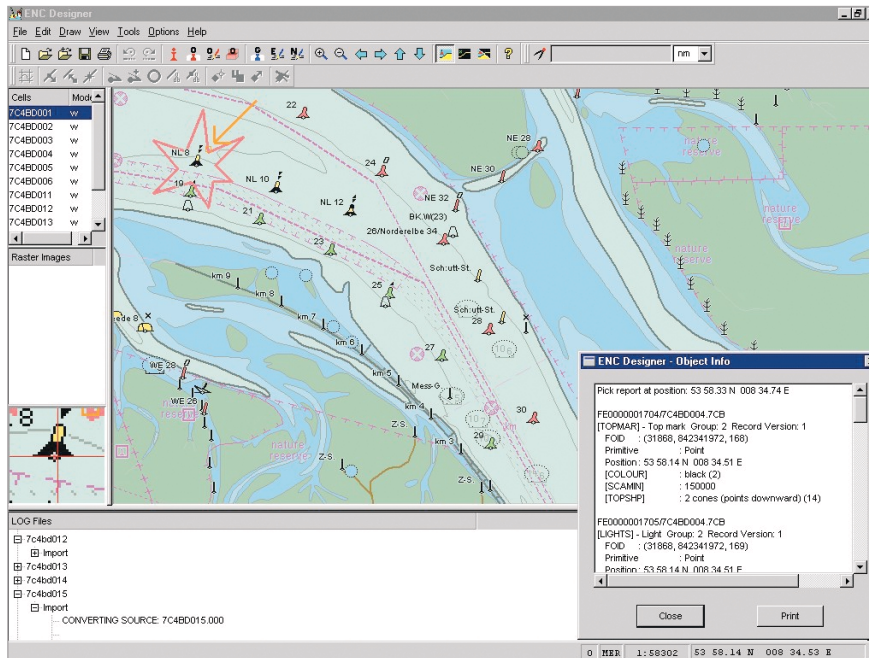


# ENC Designer

Create and maintain your Electronic Navigational Charts (ENC) in IHO S-57 format quickly and efficiently



User Interface:  
User Interface and Object Info  
of ENC Designer



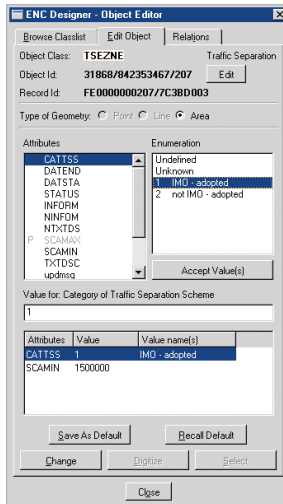
The ENC Designer Package provides a number of tools and functions to achieve your S-57 data production goals. The wide variety of functions enables you to capture, edit, modify and control the quality of ENC data within a flexible work-flow production system.

The ENC Manager, a powerful tool included in the ENC Designer Package, allows to store your ENC data sets in a logical structure similar to a database. ENCs are assigned to different working stages which enables you e.g. to update or validate ENCs. You can easily create updates, new chart editions or S-57 Exchange Sets. An unparalleled method of uniquely assigned record identifiers allows direct access to user-defined GIS databases. A C++ programming interface facilitates the integration into your current production system.

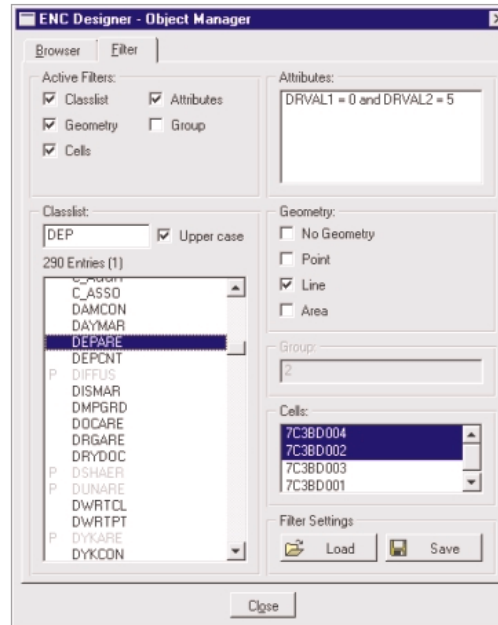
- Based on SevenCs ECDIS Kernel software components which are used in many type-approved ECDIS systems
- C++ programming interface
- Read-only mode for visual data validation
- Plot function for data verification
- Powerful editing functions
- User-friendly object and attribute queries
- Interactive, semi-automatic data capture via raster tracing; digitizer interface
- Available on Windows NT/2000/XP, LINUX, and other UNIX platforms

Extensive functions to query data sets ensure quick identification of object definitions. User-friendly edit functions allow to easily apply new objects or to change existing ones.

Loading raster images in BMP, PNG and TIF formats for semi-automatic contour tracing enable you to capture your source data and directly convert them into S-57 vector data.



**Object Editor:**  
The Object Editor offers powerful functions for creating and changing significant objects.



**Object Manager:**  
The Object Manager allows to set and combine various filters to specify your object queries.

While you work you can see your data displayed precisely in accordance with the IHO Presentation Library for ECDIS. Simply switch to another display mode to view the spatial primitives of your data. Moreover, you can also view S-57 feature and spatial objects simultaneously.



**Object Box:** A selection of available objects placed at your disposal in the Object Box.

## Use the ENC Designer's wide variety of functions to capture, edit, modify and control the quality of ENC data.

- Imports and exports ENCs in IHO S-57 data format
- Uses display engine of type-approved ECDIS
- Contains ENC Manager to maintain, update (e.g. S-57 Exchange Set generation) and validate your produced data
- Contains NTX Converter to convert NTX data into S-57 data sets
- Interacts with ENC Manager, ENC Analyzer, ENC Optimizer, ENC Generalizer, and additional plug-in tools
- Transforms coordinates from local datum into WGS84 or vice versa
- Allows to geo-reference raster data and loads these images for raster backdrop

For further information please contact [sales@sevens.com](mailto:sales@sevens.com)

[www.sevens.com](http://www.sevens.com)