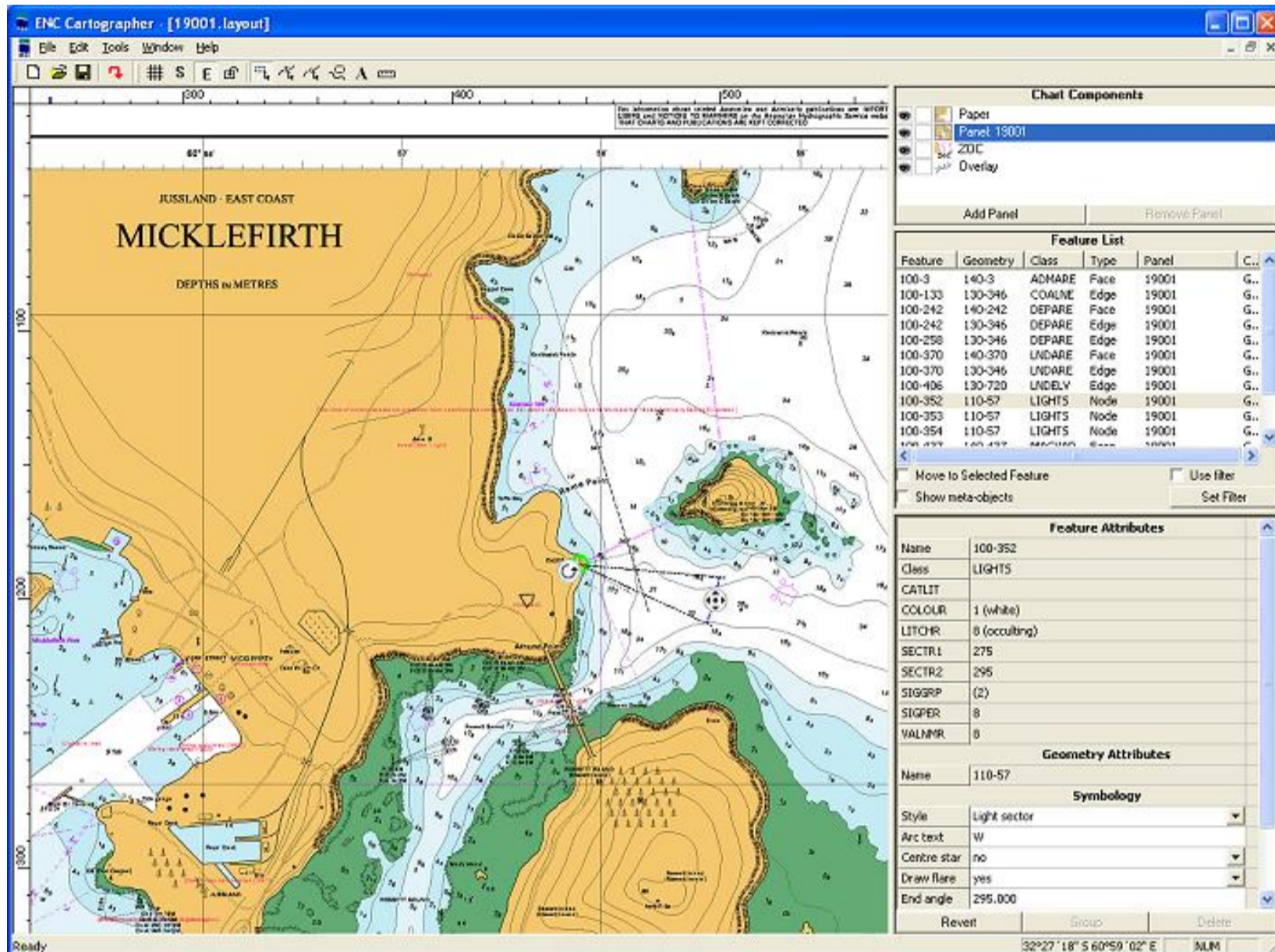


ENC Cartographer 2.1

Create and maintain INT1 & 2 compliant Paper Charts from your S-57 ENC data repository.



ENC Cartographer interface: scheme paper charts from one or more ENC's
(Micklefirth chart used with the permission of the UK Hydrographic Office)

ENC Cartographer is the latest member of the SevenCs ENC Tools family, giving you the ability to create and maintain INT1/INT2 compliant paper charts from your S-57 ENC data source.

Considerable effort goes into the compilation, encoding and quality control of an ENC. To use this effort to make paper charts allows you to offer a raster/paper product to your customers as well the ability to keep the two products closely aligned.

ENC Cartographer can be used in your chart production and maintenance facility and can be used to create special purpose high or low run products that can be saved as a TIFF or Bitmap format or sent directly to a plotter/printer.

ENC Cartographer loads S-57 base and update cells so it can be operated as a stand alone application or an integrated member of the ENC Tools suite.

While the application is built to use the ENC's M_COVR meta object/s to define the extent of the paper chart the extents can be changed to produce plans or specific charts of areas of interest.

The default symbology mappings and graticules set during the loading of the ENC are to the IHO's paper chart standards. These setting can be overridden if required.

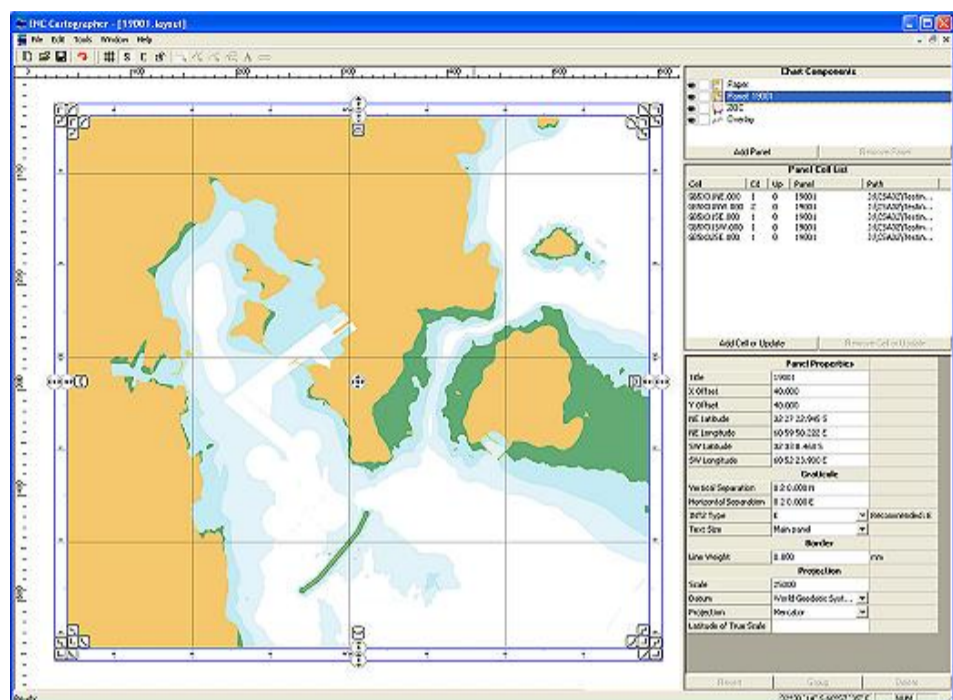
Any editing that is carried out in ENC Cartographer is recorded in a layout file. Source ENC or ENC's are not modified in any way and remain as the single point for maintaining the paper product.

ENC Cartographer recognises changes in the base cell and is able to modify the paper chart using the ENC update process enabling the paper chart to be kept up to date with the ENC maintenance cycle.

ENC Cartographer

ENC Cartographer 2.1

Scheme paper charts and automatically generate INT 1 symbology, text, INT 2 Borders and grids, Zone Of Confidence diagrams, Compass Roses, Tidal Stream Panels and more from source ENC's object and attribute combinations.



ENC Cartographer's scheming mode

Producing a paper chart using ENC Cartographer begins with the scheming process. This allows the scale, projection, plan/s and or insets to be laid out and populated with the relevant ENC or ENC's.

Once the layout of chart has been set, the application is switched to editing mode which allows all of the finer cartographic work to be done.

Although the paper chart symbology is created automatically, the finer cartographic editing that is difficult if not impossible to automate is carried out using edit mode.

The cartographic editing may entail better placement of text so as to not obscure other features, creation of depth contour values, the inclusion of Tidal Streams Table (generated from values encoded in the TS_PAD object) or the correction of line symbology due to a line being captured the wrong way in the source ENC.

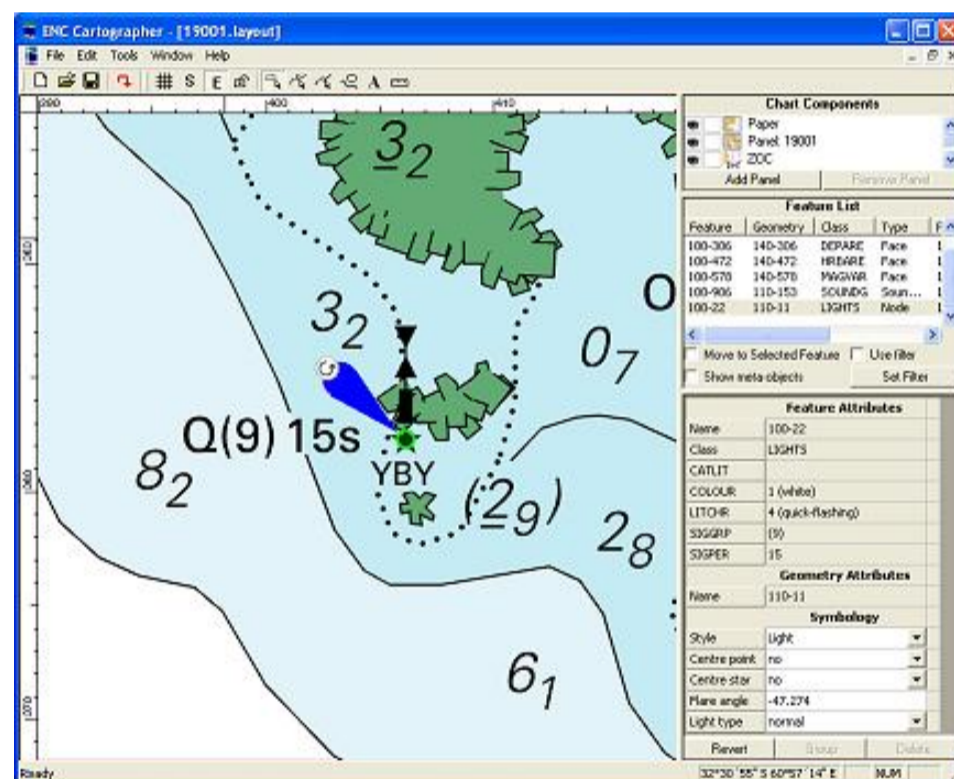
Any changes to symbology can be reverted back to the default mapping as generated from the ENC at any time. Any editing done on the base ENC is recognised in ENC Cartographer and those changes can be incorporated or rejected.

At any stage of editing the paper chart may be exported as a TIFF or bitmap file, converted to a PDF or sent to a plotter.

If you are using an application such as ENC Designer to build or maintain ENC's the raster image of the paper chart can be loaded as a backdrop, allowing the final paper product to be checked against the ENC/s it was derived from.

ENC Cartographer is the paper chart production and maintenance component of the ENC Tools suite. It is distributed by SevenCs and HSA Systems worldwide.

A fully functional demonstration version is available from the HSA web site. This version is locked to the UK Hydrographic Office's, Micklefirth ENC's/chart.



ENC Cartographers Edit mode allowing groups or individual objects to be selected and edited. The S-57 naming convention is retained in ENC Cartographer allowing easy cross reference with the source ENC.

Minimum recommended configuration.

- Microsoft Windows 2000/XP
- P4 processor 2GHz (3+GHz optimal)
- 512 MB RAM (1 GB optimal)
- 20GB disk storage for applications and data

Specifications subject to change without notice.