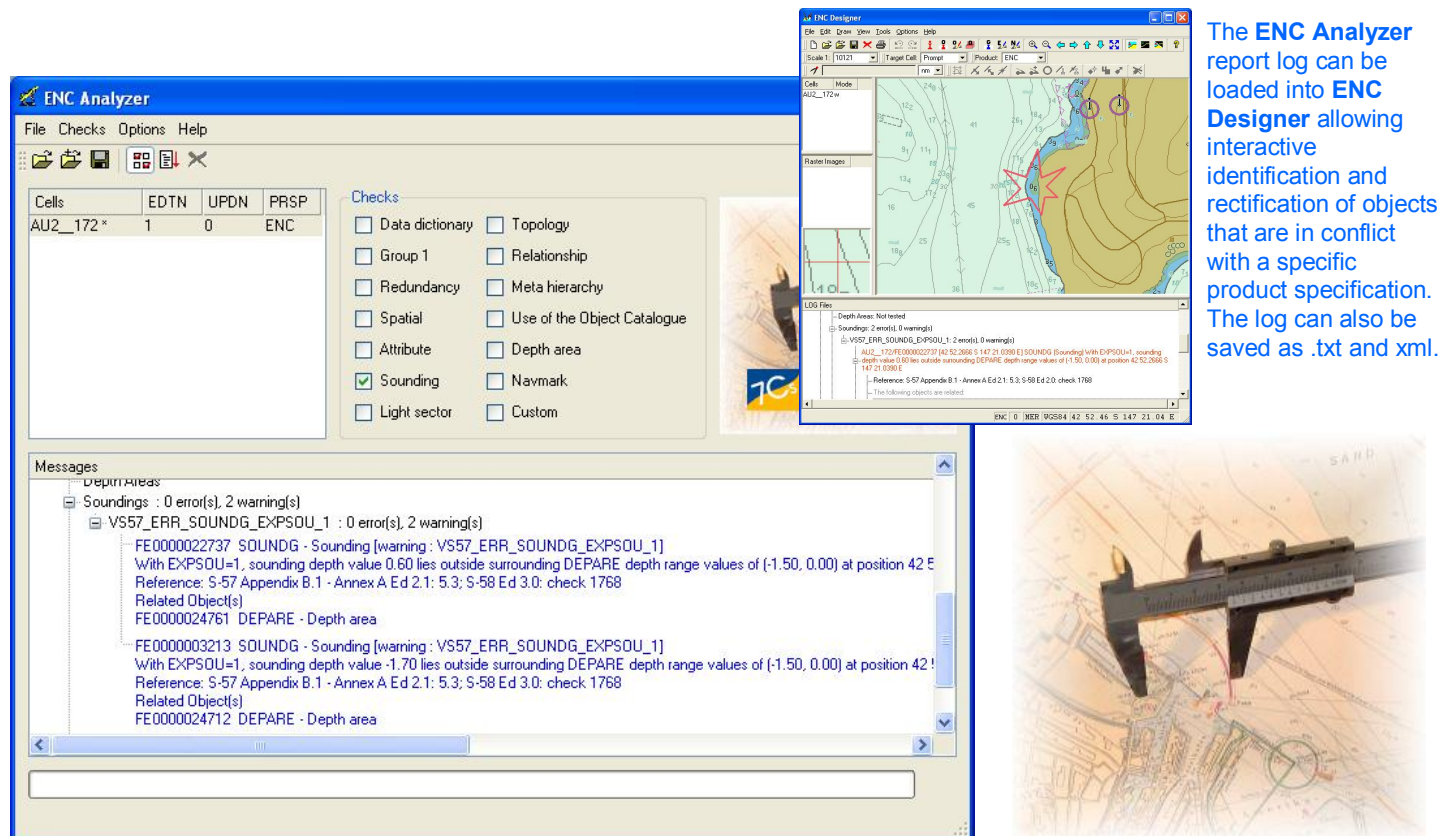


ENC Analyzer

ENC Analyzer 2.4 is a powerful validation tool for S-57 products. It now checks; Electronic Navigational Charts (ENC), Additional Military Layers (AML) and Inland ECDIS (IE) data sets.



The ENC Analyzer report log can be loaded into ENC Designer allowing interactive identification and rectification of objects that are in conflict with a specific product specification. The log can also be saved as .txt and xml.

Quality control is a critical component in the manufacture and maintenance of Electronic Navigational Charts (ENC) and derivative products. These charts products must be checked for adherence to standards, accuracy and consistency. As a Hydrographic authority or data manufacturer your reputation is on the line so you want the most comprehensive validation tool on the market. That tool is ENC Analyzer!

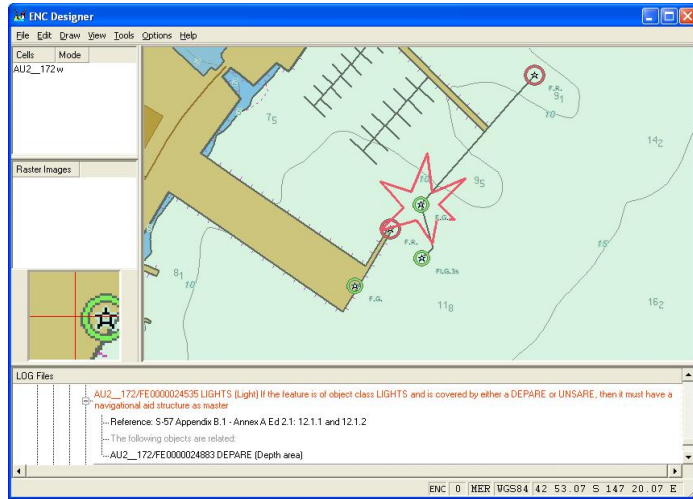
SevenCs and HSA Systems, have a long and successful history in S-57 data production, validation and electronic chart systems development. ENC Analyzer has brought together the experience and expertise of these two companies into a single product.

ENC Analyzer is the validation component of the ENC Tools suite. It is distributed by SevenCs and HSA Systems worldwide. ENC Analyzer loads ENC, AMLs and Inland ECDIS cells from an S-57 format and runs an extensive series of checks to identify the wide variety of errors that can occur during the initial production phase and the subsequent maintenance cycle.

- Selectable check groups for the different stages of production.
- Messages reported as either errors or warnings depending on severity.
- Reported messages can be grouped and exported, based on errors, warnings and error codes.
- Used either in a stand-alone mode or interactively with ENC Designer or SeeMyDEnc.
- Integrates into SevenCs ENC Manager to provide quality control during ENC production and maintenance.
- Over 800 individual checks applied to your data.
- Full Cell header summaries
- ENC update validation
- Ability to check ENC exchange sets
- Able to add user defined checks "Custom Checks"
- Available on Microsoft Windows® 2000/XP

ENC Analyzer

The world's National Hydrographic Agencies and many more data producers validate their ENC products with ENC Analyzer.



Highlighting the error and referencing the **ENC Analyzer log file** in ENC Designer.

Relationship: 58 error(s), 66 warning(s)

- VS57_REL_14: 54 error(s), 0 warnings(s)
 - AU2__172/FE0000024590 LIGHTS (Light) If the feature is of object class LIGHTS and is covered by either a DEPARE or UNSARE, then it must have a navigational aid structure as master
 - Reference S-57 Appendix E.1 – Annex A Ed 2.1: 121.1 and 121.2
 - The following objects are related:
 - AU2__172/FE0000024893 DEPARE (Depth area)

Example of an Error report

1st line contains feature identifier, object, and check reference number.

2nd line is a check-generated error report.

3rd line is a cross-reference to the relevant standard.

4th line identifies the related objects.

AU2__172/FE0000024651 RECTRC (Recommended track) If the feature is a NAVLNE or it is a RECTRC and the value of CATTRK is not equal to 2 (not based on a system of fixed marks), then it should have a parent C_AGGR

Reference: S-57 Appendix B.1 – Annex A Ed 2.1: 10.1.2; S-58 Ed 2.0: check 1682

Example of an Warning report

ENC Analyzer in brief

- Checks:
 - ENC edition 3.1.1
 - AML edition 1.0
 - Inland ECDIS edition 1.0.2 and 2.0
- Imports and checks:
 - S-57 base files (.000)
 - S-57 update files (.00n)
 - S-57 Exchange Sets (CATALOG.030, CATALOG.031)
- Performs checks according to the IHO Transfer Standard for Digital Hydrographic Data, Publication S-57, Edition 3.1.1:
 - Recommended ENC Validation Checks S-58 Edition 3.0
 - Product Specification
 - Use of the Object Catalogue for ENC
 - Data Dictionary and Data Structure
 - Checks cross-referenced to standards.
- Checks divided into categories:
 - Data Dictionary
 - Group 1
 - Redundancy
 - Spatial
 - Attribute
 - Sounding
 - Light Sector
 - Topology
 - Relationship
 - Meta Hierarchy
 - Use of the Object Catalogue
 - Depth Area
 - Navmarks
 - Custom

Specifications subject to change without notice.
AML Support is sold as an optional module.

